

# **A46 Coventry Junctions (Walsgrave)**

## **Scheme Number: TR010066**

### **6.2 Environmental Statement**

#### **Figures**

**Figures 12.1 - 12.3**

APFP Regulation 5(1)(a)

Planning Act 2008

Infrastructure Planning (Applications: Prescribed Forms  
and Procedure) Regulations 2009

Volume 6

November 2024

Infrastructure Planning

Planning Act 2008

**The Infrastructure Planning  
(Applications: Prescribed Forms and  
Procedure) Regulations 2009**

A46 Coventry Junctions (Walsgrave)  
Development Consent Order 202[x]

---

**ENVIRONMENTAL STATEMENT FIGURES**  
**Figures 12.1 - 12.3**

---

<b>Regulation Number</b>	Regulation 5(2)(a)
<b>Planning Inspectorate Scheme Reference</b>	TR010066
<b>Application Document Reference</b>	TR010066/APP/6.2
<b>Author</b>	A46 Coventry Junctions (Walsgrave) Project Team, National Highways

<b>Version</b>	<b>Date</b>	<b>Status of Version</b>
Rev 0	November 2024	Application Issue

---

## CONTENTS

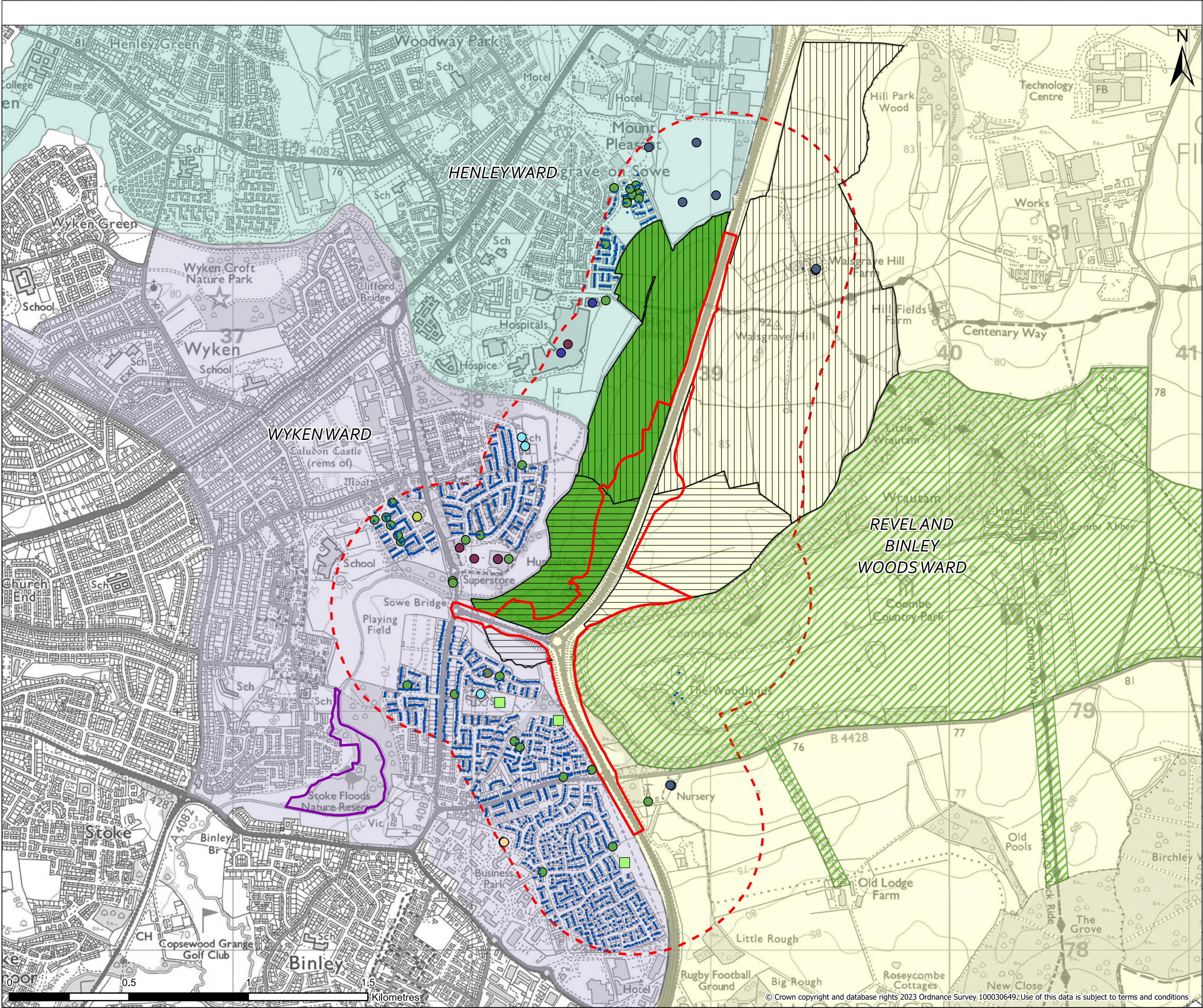
1.	Environmental Statement Figures .....	2
----	---------------------------------------	---

# 1. Environmental Statement Figures

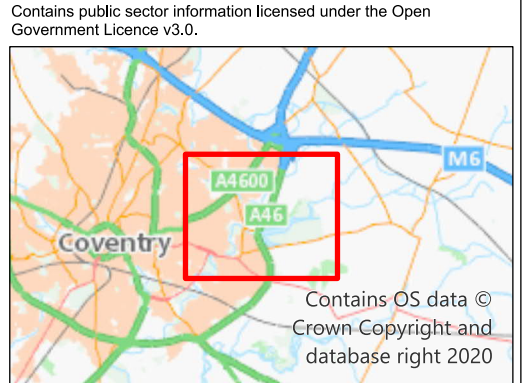
2.1 This document contains the following figures:

Figure	Figure Name
12.1	Population and Human Health land use and accessibility features
12.2	WCH facilities and survey locations
12.3	Design mitigation and enhancement measures





- Legend**
- Order Limits
  - Order Limits - 500m Buffer
  - Coombe Abbey Country Park
  - Stoke Floods Nature Reserve
  - Allocated Development Land**
  - H2:3 Walsgrave Hill Farm
  - Land Holdings**
  - Hungerley Hall Farm
  - Walsgrave Hill Farm Partnership
  - District Ward**
  - Henley Ward
  - Revel and Binley Woods Ward
  - Wyken Ward
  - Residential Property**
  - Dwelling (2467)
  - Commercial Property and Community Asset**
  - Community Services (1)
  - Education (5)
  - Hotel / Motel / Boarding / Guest House (1)
  - Industrial; (7)
  - Leisure (1)
  - Medical (2)
  - Office (2)
  - Retail (7)
  - Utility (34)
  - Play Park (3)



P01	05,11,2024	FIRST ISSUE	AC	BM	JS
REV	DATE	REVISION NOTE	ORG	CHKD	APP



Project Title  
**A46 COVENTRY JUNCTIONS (WALSGRIVE)**

Project Stage  
**DCO APPLICATION**

Drawing Title  
**FIGURE 12.1 : POPULATION AND HUMAN HEALTH LAND USE AND ACCESSIBILITY FEATURES**

Suitability  
**FOR INFORMATION**

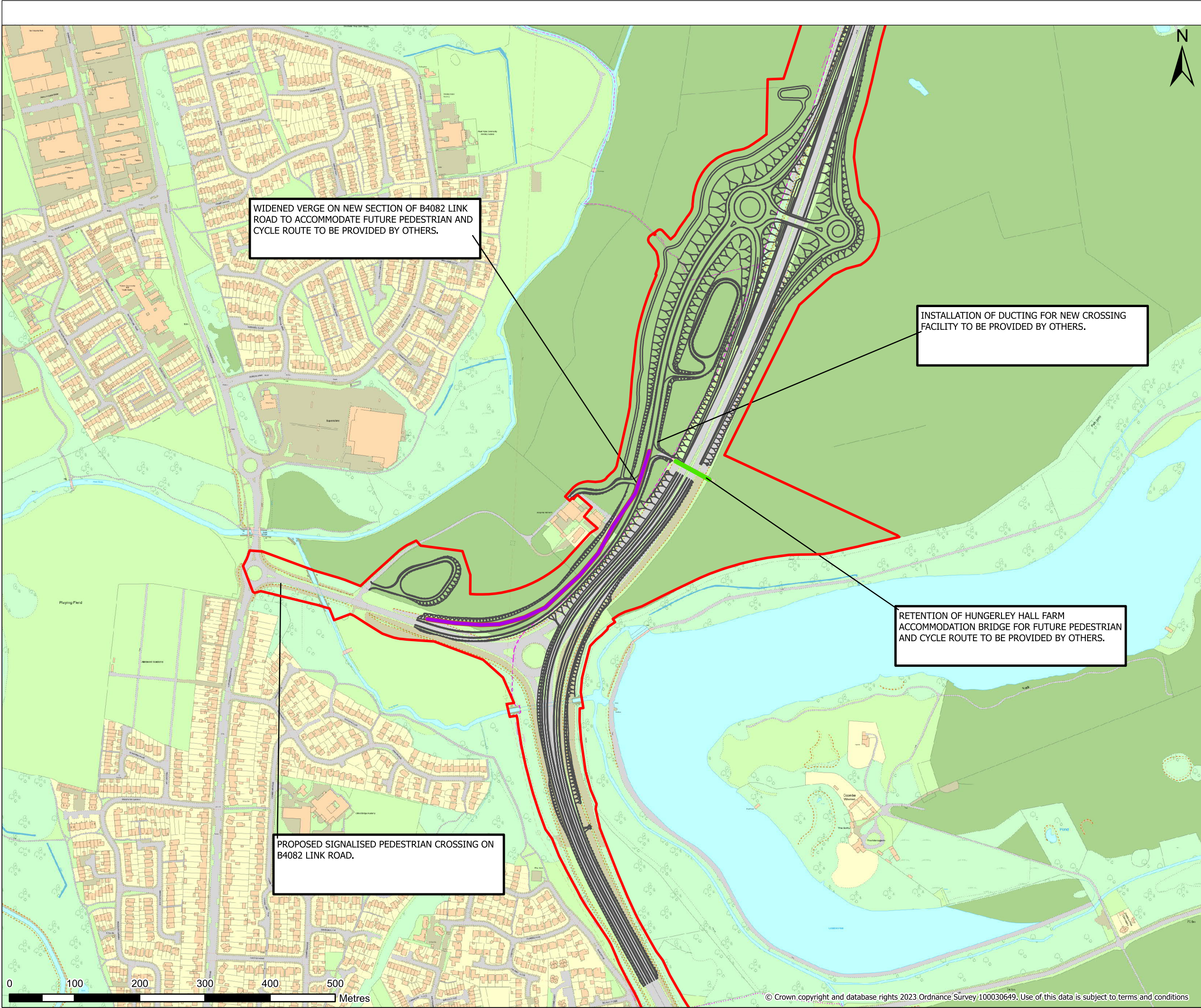
Sheet Size	Scale	Status	Revision
A3	1:15,000	S2	P01

Drawing Number  
HE604820-OIL-EPH-00-DR-LX-30003









**Legend**  

Order Limits

Scheme Design

Coventry

Contains OS data © Crown Copyright and database right 2020

P01	11,11,2024	FIRST ISSUE	AC	BM	JS
REV	DATE	REVISION NOTE	ORG	CHKD	APP
Client					
Project Title A46 COVENTRY JUNCTIONS (WALSGRAVE)					
Project Stage DCO APPLICATION					
Drawing Title FIGURE 12.3 DESIGN MITIGATION AND ENHANCEMENT MEASURES					
Suitability FOR INFORMATION					
Sheet Size A3	Scale 1:5,500	Status S2	Revision P01		
Drawing Number HE604820-OIL-EPH-00-DR-LX-30005					

© Crown copyright and database rights 2023 Ordnance Survey 100030649. Use of this data is subject to terms and conditions